

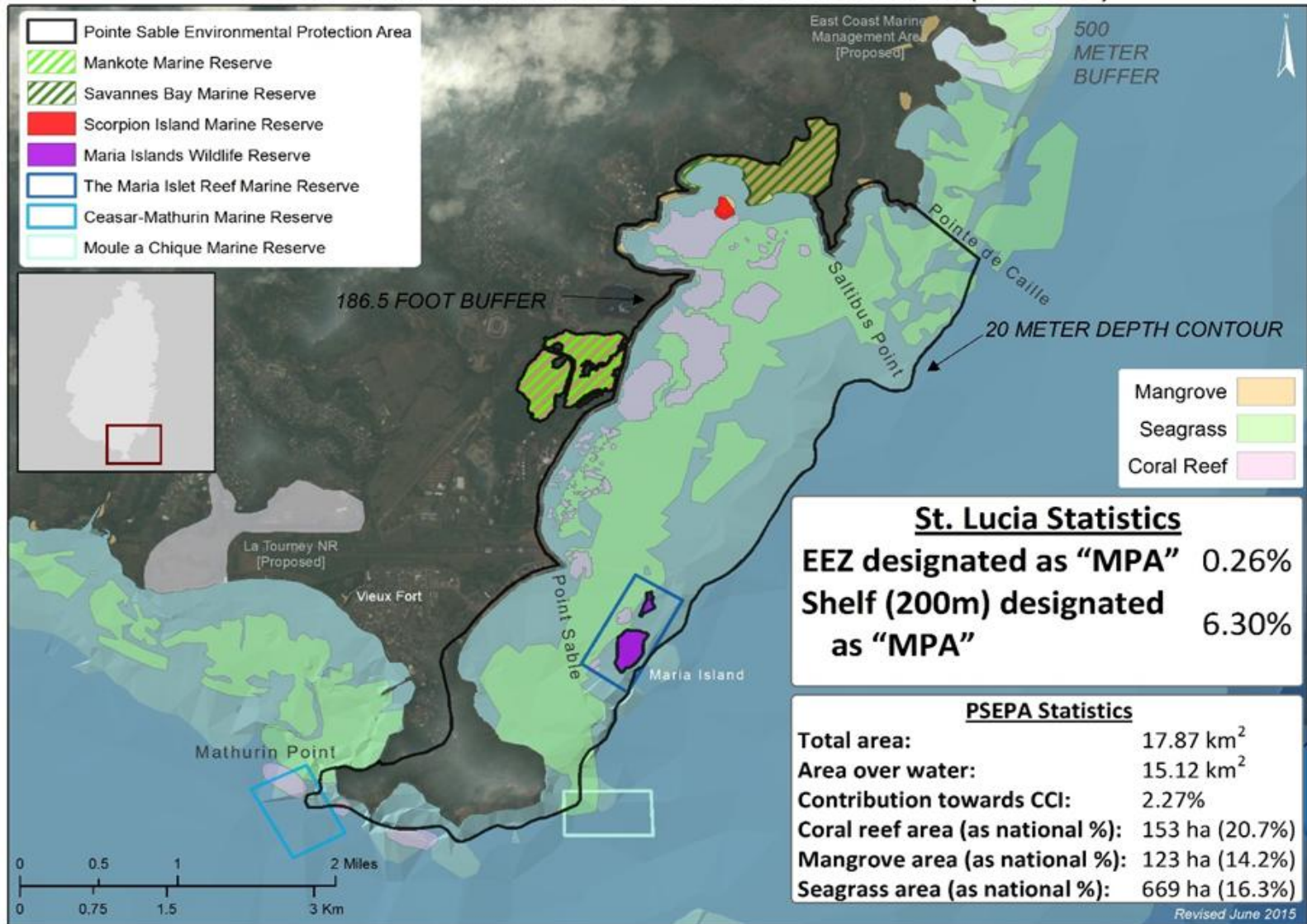


Pointe Sable Environmental Protection Area [PSEPA]



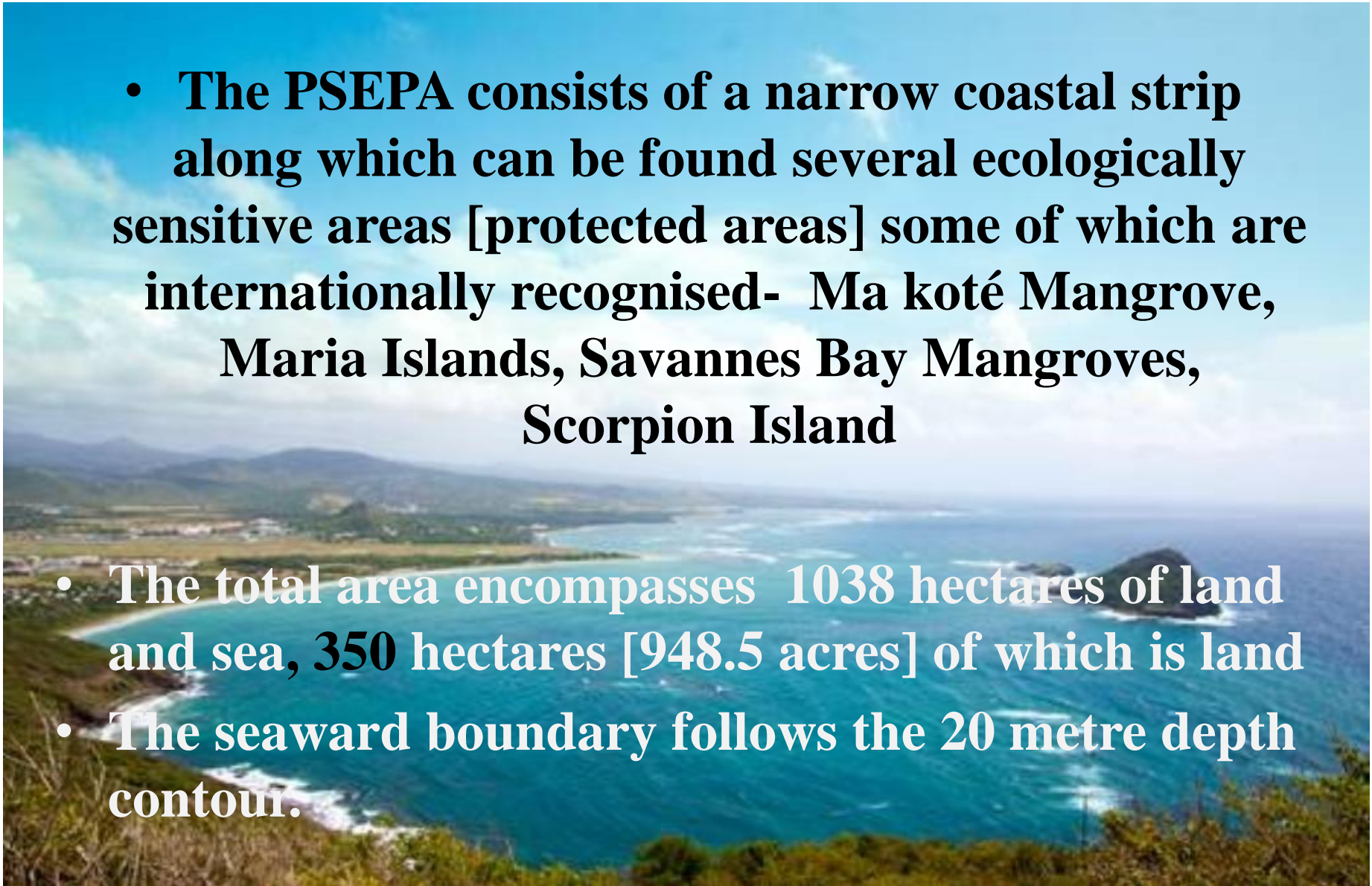
Prepared by: Kina Nicholas
Project Officer

Point Sable Environmental Protection Area (PSEPA)



Description of the Area

- **The PSEPA consists of a narrow coastal strip along which can be found several ecologically sensitive areas [protected areas] some of which are internationally recognised- Ma koté Mangrove, Maria Islands, Savannes Bay Mangroves, Scorpion Island**
- **The total area encompasses 1038 hectares of land and sea, 350 hectares [948.5 acres] of which is land**
- **The seaward boundary follows the 20 metre depth contour.**



Management Objectives

The PSEPA was conceptualised to promote the integration of the various facets of development and associated livelihoods to encourage sustainability, employment, social development and maximized economic benefit for the surrounding community (SLNT, 2010).

There must be a dual objective of biodiversity conservation and community livelihoods.

Maria Major



Courtesy of Matthew Morton

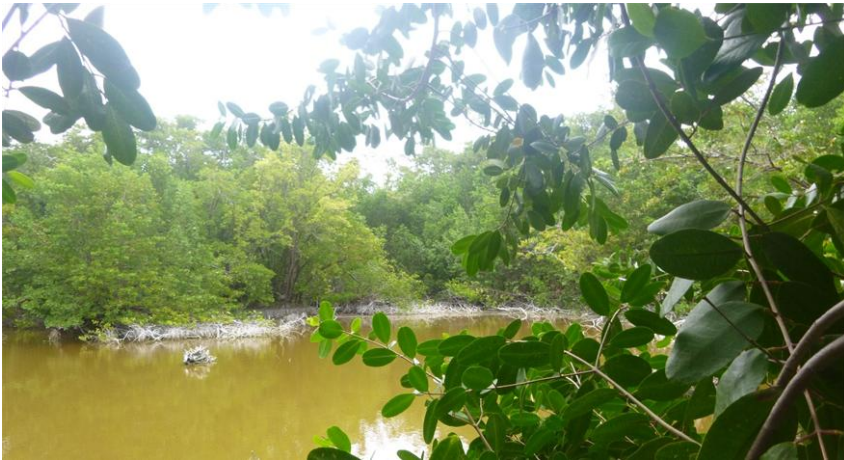
Maria Minor



Courtesy of Matthew Morton

Mangroves

Ma Koté Mangrove



Savannes Bay

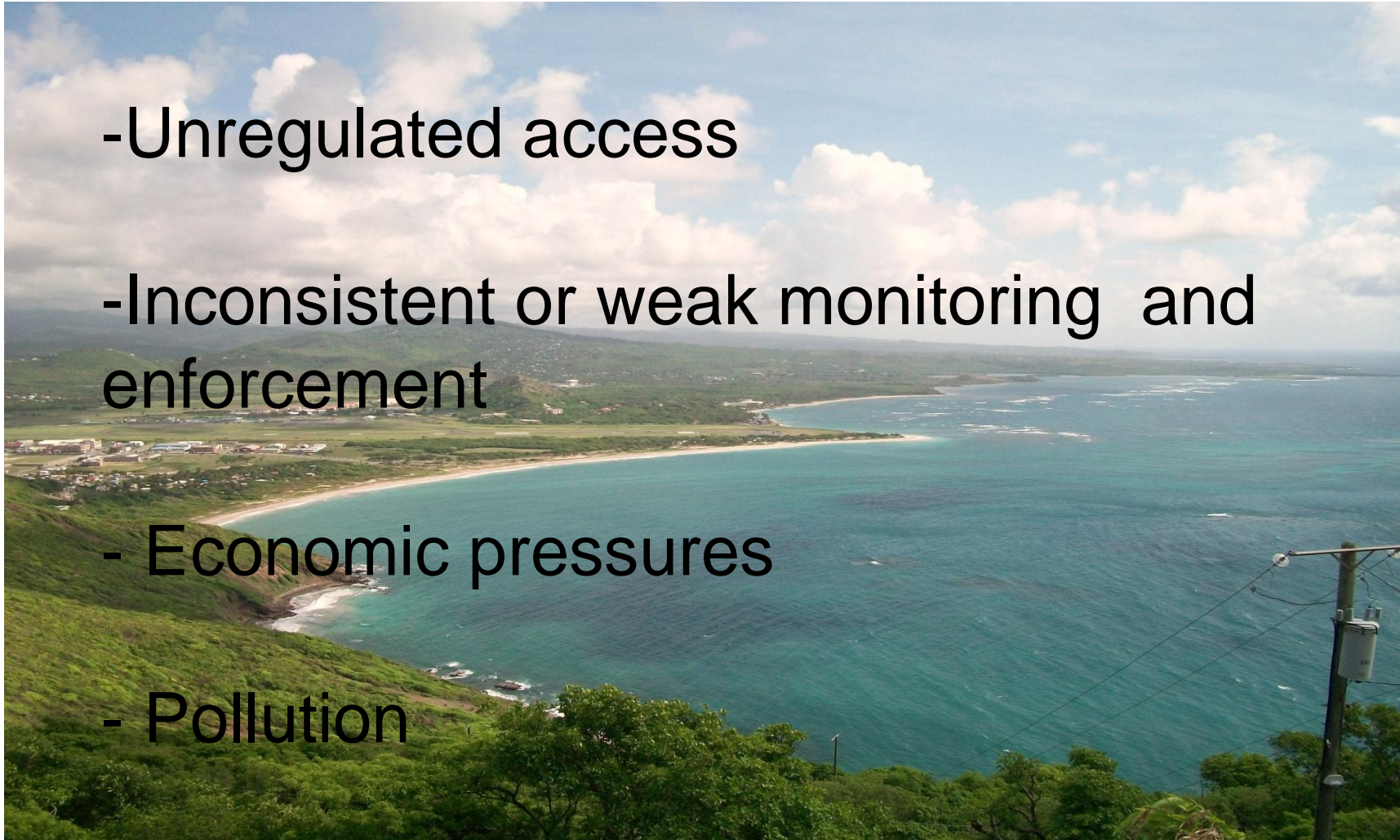


Charcoal production



PSEPA Threats

- Unregulated access
- Inconsistent or weak monitoring and enforcement
- Economic pressures
- Pollution



Sargassum



More Sargassum Seaweed



Flooding and coastal erosion



Severe Coastal Erosion



Destruction of natural coastal defenses



Mangrove Die Back



Pollution

Improper solid waste management



Poor waste water management



OAS - Intervention

“Building sustainability of the coastal communities of Vieux Fort, Saint Lucia and the Pointe Sable Environmental Protection Area (PSEPA)”

Priority 1: Community-Based Clean Energy and Energy Efficiency

- This will advance the use and adoption of energy efficient technologies, specifically those which could be adopted by lower income groups.

- **Related Activities:**

- Presentations about clean energy and energy efficiency for Vieux Fort stakeholders
- Energy efficient demonstration site established at SLNT southern office

TWO (2) KILOWATT PHOTOVOLTAIC SYSTEM DEMONSTRATION SITE

Project Title: "Building sustainability of the coastal communities of VieuxFort, Saint Lucia including the Pointe Sable Environmental Protection Area (PSEPA)



Organization of American States | More rights for more people



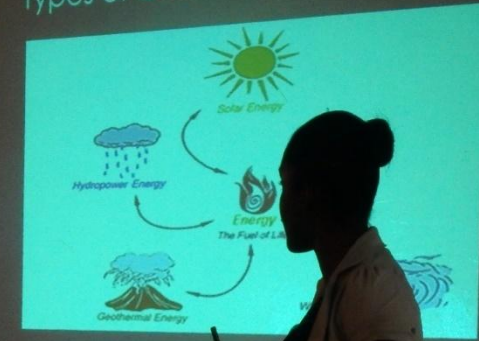
Energy and Climate Partnership of the Americas

Funded by:



Government of the United States

Types of CLEAN Energy



What We Do



Priority 2: Resilience to Natural Disasters

This is in order to strengthen Saint Lucia's capacity to successfully plan, manage and mitigate the risks associated to natural hazards at the community level, thereby contributing to their efforts to become more resilient.

Talking Sustainable Cities and Coastal Zone Issues



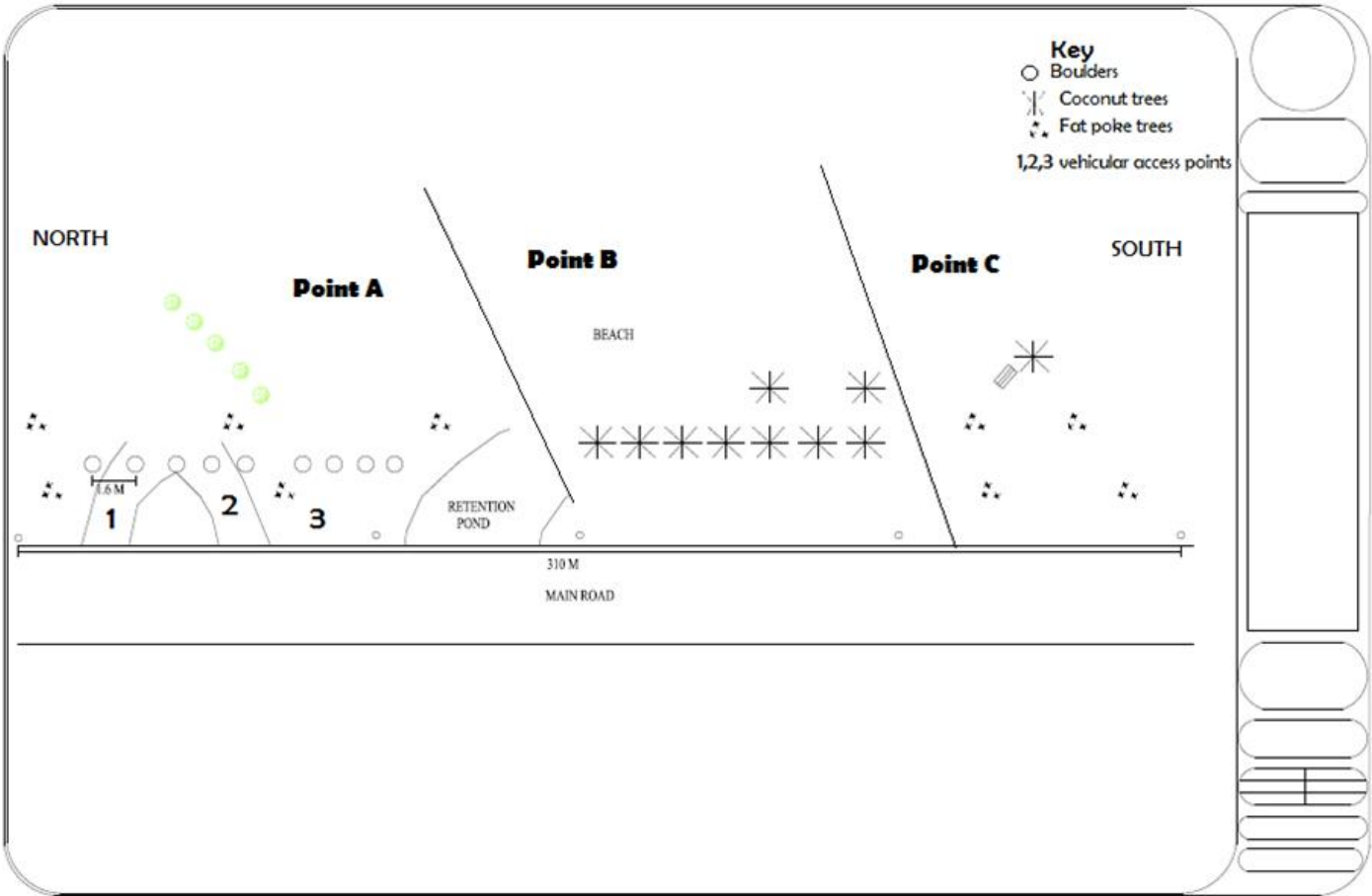
SANDY BEACH LANES



Strengthening Resilience



Proposed Anse Du Sable Beach Protection Measures



Priority 3: Waste Management, Recycling (including Electronic Waste) and Improved Water Resource Management

- The activities under this priority area are designed to:
 - Promote separation of waste;
 - Promote household and business-level composting for green waste management;
 - Promote public-private partnerships for recycling of waste from PSEPA and adjoining businesses;
 - Making effective use of fresh water resources by demonstrating and promoting rain water harvesting;

Recycling: Composting Option



Priority 4: Sustainable Transport Solutions

- The focus is recreational use zoning for the main recreational zone of Vieux Fort, Anse du Sable, which is in the coastal zone of PSEPA.

Related Activities:

- Consultation meetings about user conflict, local transit and recreational use and zoning plan;
- Recreational use zoning plan established for Anse Du Sable

Beach Use and Zoning



RECYCLING



Water Quality Testing



Mangrove Nursery



Mangrove Nursery



Mangrove Nursery



The work has just began, if we
act now more can be done!

ANY QUESTIONS?

